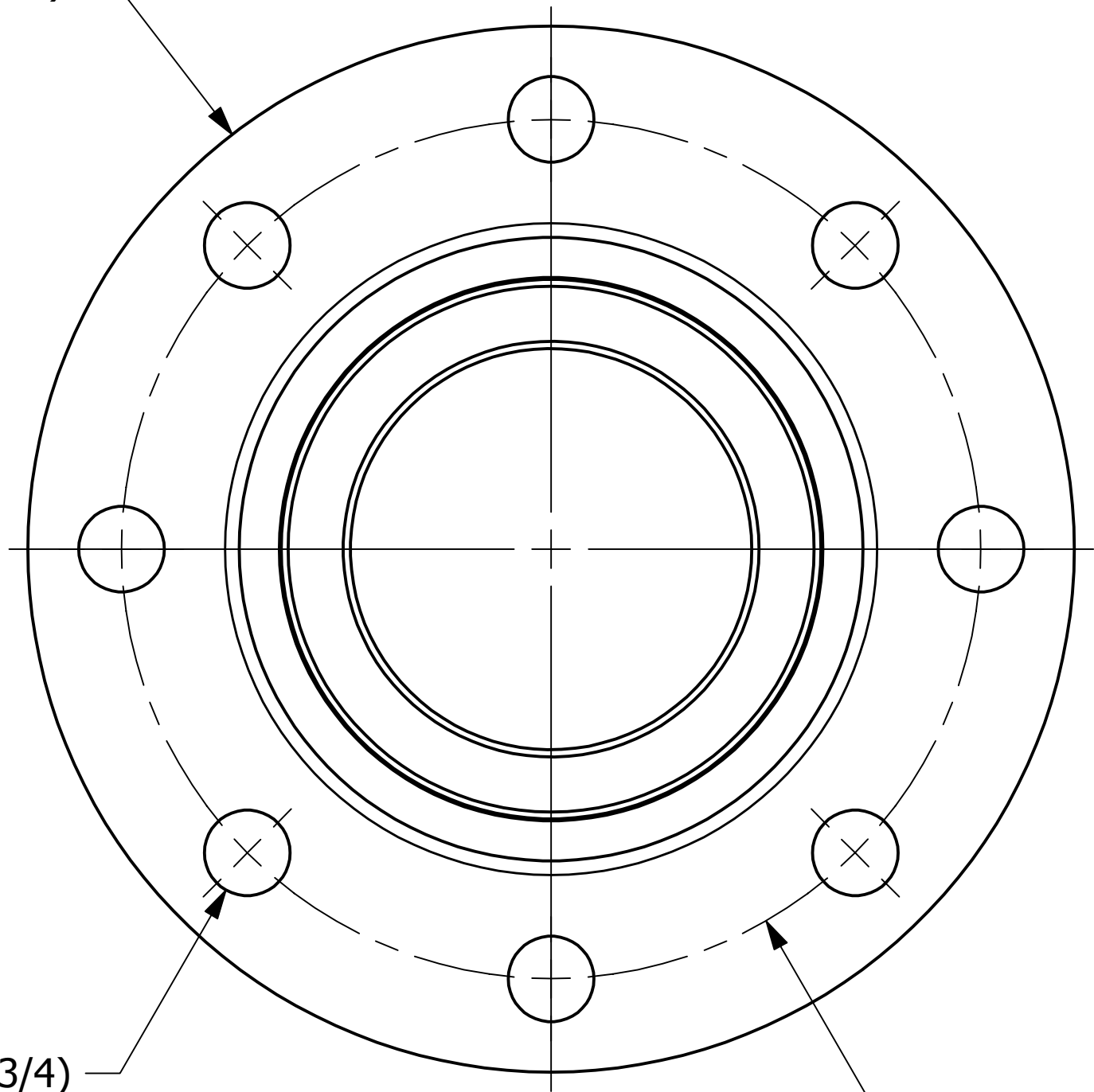
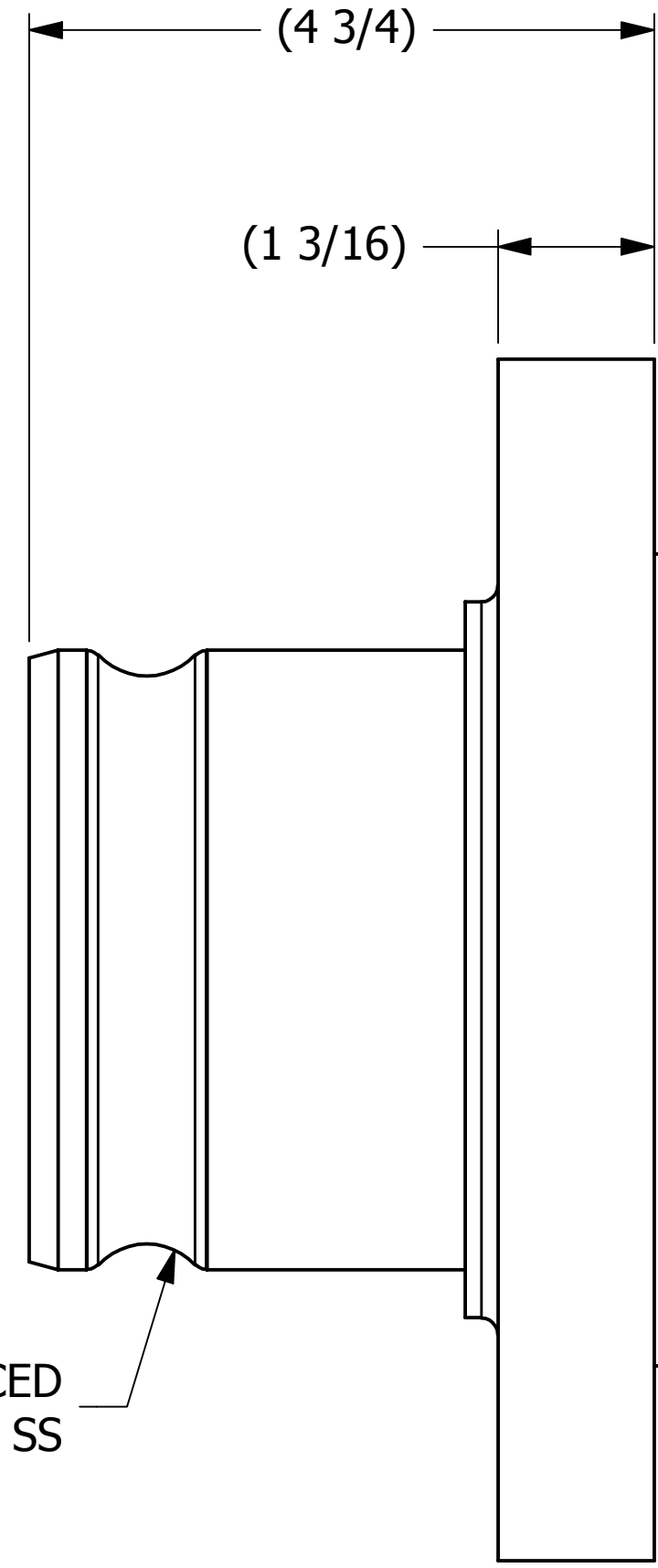


(Ø9 1/8)



8X (Ø3/4)

(Ø7 1/2)



(4 3/4)

(1 3/16)

SERRATED
GASKET
SURFACE

4" REINFORCED
CAM 316 SS

SALES DRAWING

SALES DRAWING

A	VD	08-18-10	ADDED PART TO SYSTEM.
REV	BY	DATE	DESCRIPTION

UNLESS OTHERWISE SPECIFIED
DIMENSIONAL TOLERANCES
FRACTIONAL: ±1/16
X.XX: ±.03
X.XXX: ±.015
ANGLE: ±1°
DEBURR ALL SHARP EDGES.
ALL MACHINED SURFACES TO
HAVE A 125 RMS FINISH UNLESS
NOTED OTHERWISE.

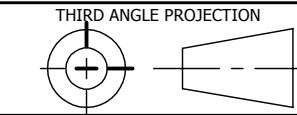
DRAWN BY:	VD
CHECKED BY:	CHL
PROTOTYPE BY:	VD
PROTOTYPE DATE:	7/6/2009
APPROVED FOR PRODUCTION BY:	
PRODUCTION DATE:	

SALCO PRODUCTS, INC.

PART NAME:
QUICK CONNECT FLANGE 4"

MATERIAL: **SALCO PE/316 SS**
PROJECT #: **090706** SHEET #: **1 OF 1** SCALE: **1:1**

DRAWING #: **C27150** PART #: **HS4FTKRPY**



THIS PRINT, PROPERTY OF SALCO PRODUCTS INC., CONTAINS PROPRIETARY INFORMATION AND MUST NOT BE COPIED, REPRODUCED, OR USED DETRIMENTALLY TO OUR INTEREST.